



DU PONT
HANDEL EN MAATWERK

MINI NEON LED

Technische Fiche

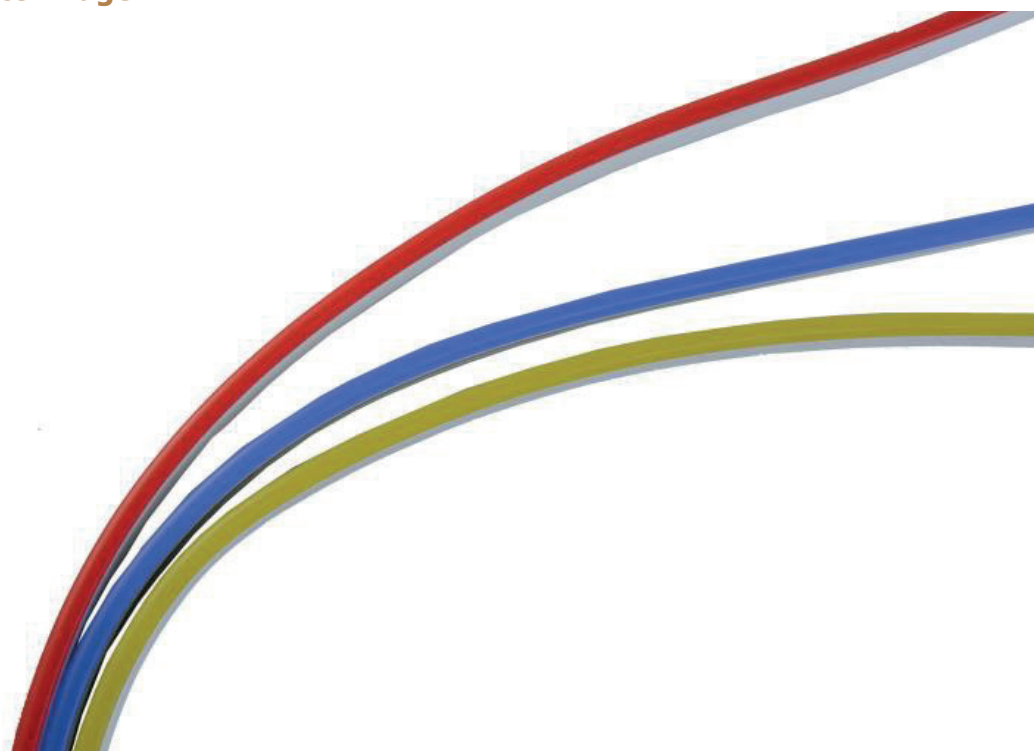
MINI FLEX

Product Specification

Product Name: LED Silicone Neon Strip

Product Number: LM2835-WU120-24V

Product Image



Technical Parameters

Mode	LED Q'ty/M	Color temperature		CRI (Ra)	Voltage (V DC)	Electric current (A/m)	Power ± 10% (W/m)	Size
LM2835- WU120- 24V	120	White	6000-6500K	80+	24	0.42	10	6*12mm
		Natural White	4000-4500K					
		Warm White	2700-3000K					
		Red	620-625nm					
		Blue	455-460nm					
		Green	520-525nm					
		Yellow	590-592nm					



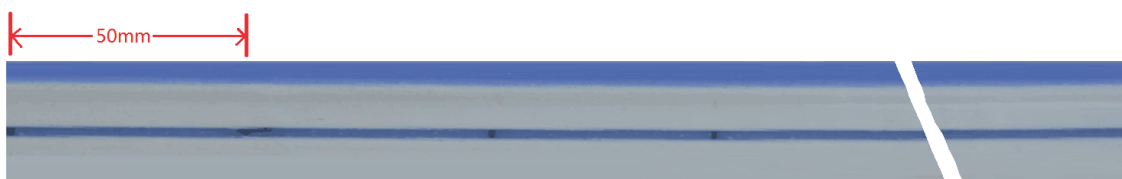
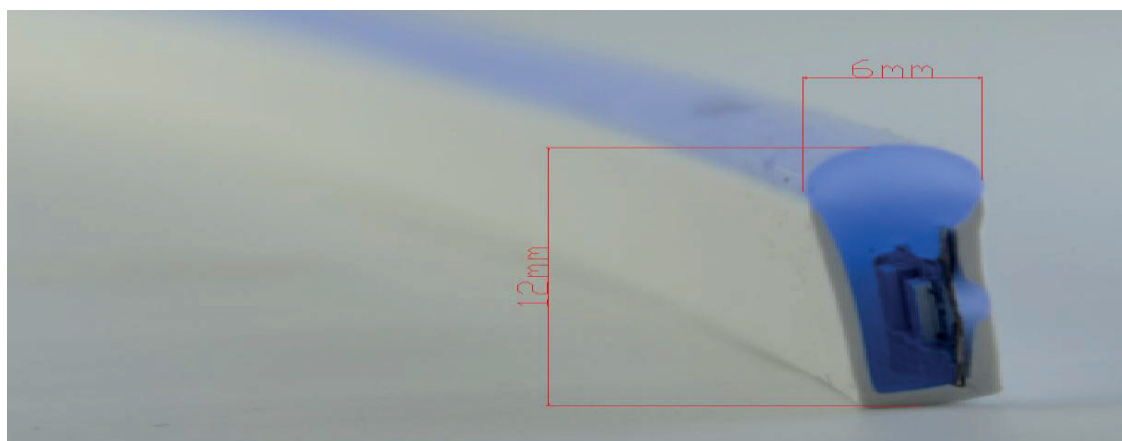
DU PONT
HANDEL EN MAATWERK

MINI NEON LED

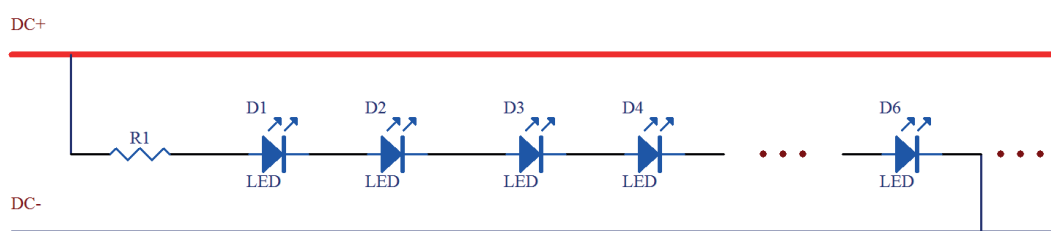
Technische Fiche

MINI FLEX

Dimension (mm/inch)



Linking Operation



Installation





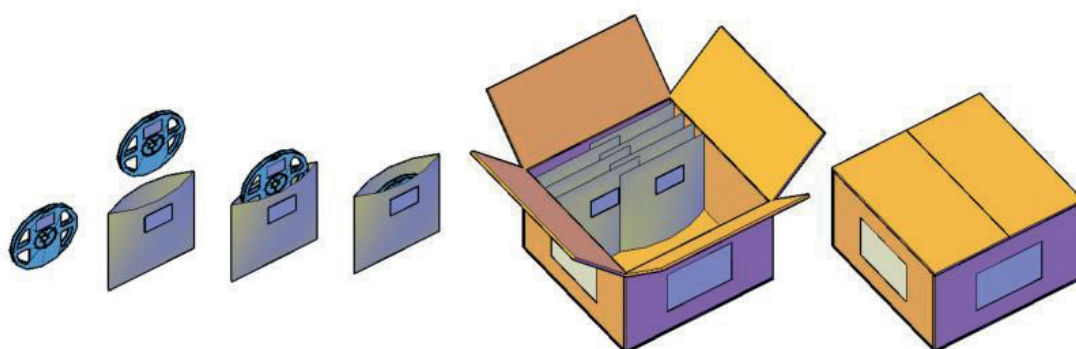
DU PONT
HANDEL EN MAATWERK

MINI NEON LED

Technische Fiche

MINI FLEX

Product Packaging



Safety Information

- The strip itself and all its components may not be mechanically stressed.
 - Assembly must not damage or destroy conducting paths on the circuit board.
 - Installation of LED ribbon (with power supplies) needs to be made with regard to all applicable electrical and safety standards. Only qualified personnel should be allowed to perform installations.
 - Correct electrical polarity needs to be observed. Wrong polarity may destroy the strip.
 - Parallel connection is highly recommended as safe electrical operation mode.
 - Serial connection is not recommended. Unbalanced voltage drop can cause hazardous overload and damage the strip.
 - Please ensure that the power supply is of adapters power to operate the total load.
 - When mounting on metallic or otherwise conductive surfaces, there needs to be an electrical isolation points between strip and the mounting surface.
 - Pay attention to standard ESD precautions when installing the strip.
 - Damaged by corrosion will not be honored as a materials defect claim.
- It is the user's responsibility to provide suitable protection against corrosive agents such as moisture and condensation and other harmful elements.